

# **VS DISPLAY TECHNOLOGY (HK) LTD**

---

## **SPECIFICATION FOR LCD MODULE**

Model No.: VS-RTD2665HV-V1

<b>ORGANIZED BY</b>	<b>CHECKED BY</b>	<b>APPROVED BY</b>
<b>RAJU PAU</b>	<b>JOHNSON</b>	<b>CRISTAL RAMY</b>

**COMPANY CONTACT:**

**TEL: 86-755-82508603**

**FAX: 86-755-27839264**

**518100 11B No.1, JINHUI BUILDING, BAOAN DISTRICT, SHENZHEN CITY, GUANGDONG PROVINCE, CHINA.**

**URL: [WWW.VSLCD.COM](http://WWW.VSLCD.COM)**

# VS DISPLAY TECHNOLOGY HK LTD

---

## 1、General Description

The main chip uses the latest chip RDT2556-CG of Realtek Semiconductor, which can complete the output from the PC Digital HDMI signal to the LCD module, can support the conversion of eDP signal, the program design is mainly used for Matching TFT LCD PANEL for maximum resolution up to WUXGA analog R, G, B input.

The board support up to 24bit, up to 16.7 million pixels, ADC, frequency up to 165MHz.

The board support dynamic contrast control, headphone input and Digital volume control simultaneously.

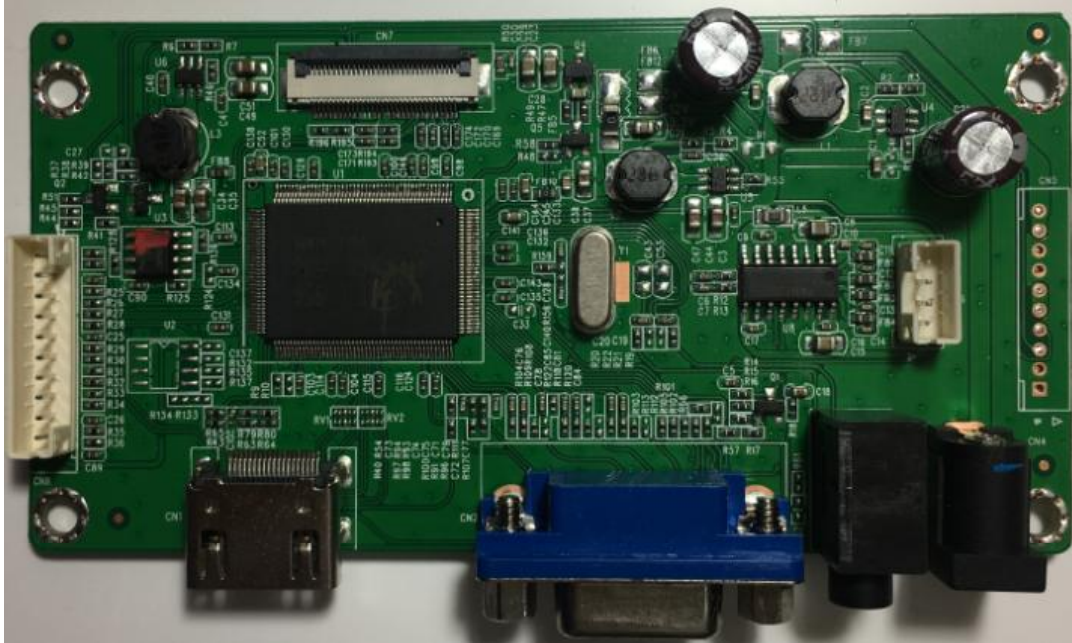
The board up to 1920x1200 and support function of HDCP

## 2、Feature

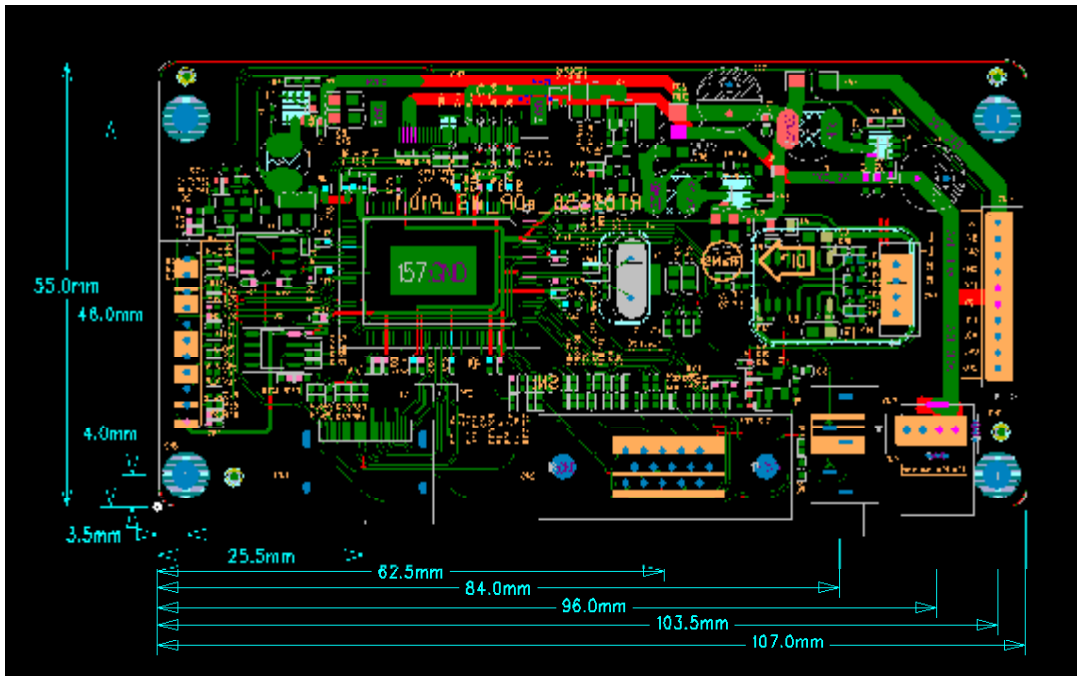
CHIP	RTD2556-CG		
	PC	Up to Resolution	1920*1200
		Display Color	32bit
		Horizontal	31.5-94.038KHz
		Vertical	60-75Hz
	<b>Input</b>	VGA	RGB(0.7Vp-p)
	<b>Input</b>	HDMI	HDMI (T.M.D.S)
	<b>Output</b>	PANEL Interface	0.5mm Pitch 30PIN FFC Connector
	<b>Output</b>	Earphone	Standby
<b>Power</b>	<b>Input</b>	12V DC	
	<b>To Panel</b>	3.3V/5V/12V Optional	
	<b>Operateing</b>	Normal Standby	
	<b>Standby Power</b>	<0.3W	
	<b>OSD Menu</b>	Brightness Contrast Auto Adjust H/V Postion and so on	
	<b>OSD Language</b>	Chinese English	
	<b>Keyboard</b>	POWER、LEFT、RIGHT、AUTO、MENU、UP、DOWN	

# VS DISPLAY TECHNOLOGY HK LTD

## 3、Photo And Dimension Size



- 1、PCB H ≤ 16mm    2、PCB L = 107.0 mm    3、PCB W = 55.0mm



## VS DISPLAY TECHNOLOGY HK LTD

---

### 4、VGA (VGA Mode Table )

<b>VGA Mode Table</b>			
<b>Model</b>	<b>Resolution</b>	<b>H (KHz)</b>	<b>V (Hz)</b>
WUXGA	1920*1200	74.556	60
WUXGA	1920*1080	67.5	60
UXGA	1680*1050	59.8	60
WXGA+	1440*900	55.5	60
SXGA	1280*1024	63.5	60
		80.0	75
XGA	1024*768	48.4	60
		56.5	70
		60.0	75
SVGA	800*600	37.9	60
		47.2	72
		46.9	75
VGA	640*480	31.5	60
		37.9	72
		37.5	75
DOS	720*400	31.5	70

## VS DISPLAY TECHNOLOGY HK LTD

---

### 5、Input/Output Connector

◆CN7 (SMD 0.5mm 30FFC Connector) :EDP Output Port

Pin	Symbol	Description
1	NC	No Connection
2	LED_VCC	BL POWER
3	LED_VCC	BL POWER
4	LED_VCC	BL POWER
5	LED_VCC	BL POWER
6	NC	No Connection
7	NC	No Connection
8	LED_PWM	LED Dimming Control
9	LED_EN	LED BL_Enable control
10	GND	GROUND
11	GND	GROUND
12	GND	GROUND
13	GND	GROUND
14	HPD	Hot Plug Detect
15	GND	GROUND
16	GND	GROUND
17	NC	No Connection
18	VCCS	Power Supply
19	VSSC	Power Supply
20	GND	GROUND
21	AUX-	Complement Signal-Auxiliary Channel
22	AUX+	True Signal-Auxiliary Channel
23	GND	GROUND
24	ML0+	True Signal-Main Lane 0
25	ML0-	Complement Signal-Lane 0
26	GND	GROUND
27	ML1+	True Signal-Main Lane 1
28	ML1-	Complement Signal-Lane 1
29	GND	GROUND
30	NC	No Connection

◆CN9 (PH2.0mm-6AW) : **Backlight&Inverter Port**

Pin	Symbol	Description
1	+12V	+12VDC
2	+12V	+12VDC

## VS DISPLAY TECHNOLOGY HK LTD

---

3	BACL_EN	Backlight Enable
4	BACL_ADJ	Backlight Adjust
5	GND	GND
6	GND	GND

### CN1 (SMT HDMI,): HDMI Port

Pin	Symbol	Description
1	DATA2+	DATA
2	GND	GND
3	DATA2-	DATA
4	DATA1+	DATA
5	GND	GND
6	DATA1-	DATA
7	DATA0+	DATA
8	GND	GND
9	DATA0-	DATA
10	DCLK+	CLOCK
11	HDMI_DET	INPUT DETECT
12	DCLK-	CLOCK
13	NC	NC
14	NC	NC
15	HDMI_SCL	DDC CLOCK
16	HDMI_SDA	DDC CLOCK
17	GND	GND
18	HDMI5V	HDMI5VINPUT
19	HDMI_HPD	HPD DETECT

### ◆ CN8 (PH2.0mm-10AW): Keyboard

Pin	Symbol	Description
K1	DOWN	
K2	UP	
K3	MENU	
K4	AUTO	
K5	RIGHT	

## VS DISPLAY TECHNOLOGY HK LTD

K6	LEFT	
K7	GND	
K8	LED-G	
K9	LEG-R	
K10	POWER	

### ◆CN2:VGA Port

Pin	Symbol	Description
1	RED	
2	GREEN	
3	BLUE	
4	NC	
5	VGA_DET	
6	GND	
7	GND	
8	GND	
9	VGA_5V	
10	GND	
11	NC	
12	DDC_SDA	
13	HSYNC	
14	VSYNC	
15	DDC_SCL	

### ◆ CN6 (PH2.0mm-4AW 180) Speaker Port

Pin	Symbol	Description
1	L-	
2	L+	
3	R+	

### ◆CN3 EarPhone Port

CN3 (PC Audio Input) JACK-3.6 φ PHONE PJ-358 5P H=12mm,

## 5、Condition

Operation Temp.: 0~+50 °C

Storage Temp. : -20~+60 °C

Operation humidity: 10%—80%RH

Storage humidity : 10%—93%RH